

Contact: Mike Horyczun  
Director of Public Relations  
(203) 869-6786, ext. 330

For Immediate Release  
March 5, 2008

## **Exhibition Programs**

### ***20th Century American Prints from the Bruce Museum Collection***

#### **March 29 - July 6, 2008**

**Bruce Museum**  
**1 Museum Drive, Greenwich, CT**

**Tuesday - Friday, April 15, 16, 17, 18, at 10:30 a.m.**

**April Vacation Workshops: Printmaking Fun!**

Inclusive, hands-on art workshops for students in grades 1 – 3, who will explore the Museum's exhibition and then work on related printmaking projects.

**Tuesday:** Gyotaku – Japanese Fish Printing

**Wednesday:** Scratch Board Printing

**Thursday:** Silk Screen Printing

**Friday:** Monotype Prints

Programs are suitable for students of all abilities. Members \$5 per child, per day; non-members \$7 per child, per day. Includes all materials. Reservations are required; call the Museum (203) 869-0376.



Donald Freeman (1908-1978)  
*Wall Street at Noon*, 1934  
Lithograph, 19 ¾ X 22 ¾ in.  
Gift of Daniel M. Friedenberg  
Bruce Museum Collection

**Mondays, April 21, 28, May 5, 19, at 10 a.m.**

**Monday Art History Lecture Series: American Printmaking**  
**Co-Sponsored by the Bush-Holley Historic Site**

A series of four lectures by scholars presented at the Bruce Museum in conjunction with the exhibitions *20<sup>th</sup> Century American Prints from the Bruce Museum Collection* and *From Harbor to Haven: Connecticut Scenes and Artist Printmakers from the Collection of Dave and Reba Williams* (Bush-Holley). Lectures begin promptly at 10 a.m. Due to the overwhelming popularity of these lectures, advance reservations and payment are strongly recommended. Series price – all 4 lectures: Bruce Museum and Bush-Holley members \$32, non-members \$40; single lectures: members \$10, non-members \$12.

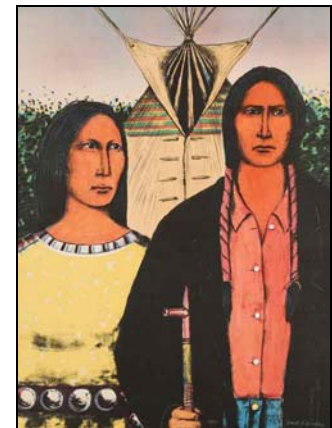
**April 21: *Printmaking 101: Basic Techniques of Printmaking*, Anthony Kirk**, Artistic Director/Master Printer from the Center for Contemporary Printmaking in Norwalk

**April 28: *History of Printmaking in America*, Robin Garr**, Director of Education Bruce Museum and exhibition curator

**May 5: *Childe Hassam as Printmaker*, Elizabeth Barker**, Director and Chief Curator

Mead Art Museum, Amherst College

**May 19: *Alexander Calder as Printmaker*, Jodi Roberts**, PhD Candidate, Institute of Fine Arts, New York University



David P. Bradley (b. 1954)  
*American Indian Gothic*, 1983  
From *Indian Self-Rule Portfolio*  
Published by Sun Valley Center  
Color lithograph, 30 ½ X 22 ½ in.  
Bruce Museum Collection

**Monday, May 5, 11 a.m. - 1:30 p.m.**

**Hassam at the Bush-Holley House Historic Site**

Bush-Holley Historic Site, 39 Strickland Road, Cos Cob

Immediately following the lecture on May 5, the Bush-Holley Historic Site will host an informal lunch and present guided tours of the exhibition ***From Harbor to Haven*** as well as a special Hassam-focused tour of the Bush-Holley House that will feature works by Childe Hassam in the museum collection. To take advantage of this unique opportunity, call the Bush-Holley House at (203) 869-6899. Tours and box lunch at 11:30 a.m. \$15; Tours only of Bush-Holley House at 12:30 p.m. \$7.

**Saturday, June 21, 10 a.m. - 5 p.m.**

**Greenwich Museums Focus on American Prints**

**Bush-Holley Historic Site and the Bruce Museum**

Enjoy two exhibitions at two Greenwich museums for the price of one on the same day: ***20th Century American Prints from the Bruce Museum Collection*** at the Bruce Museum and ***From Harbor to Haven; Connecticut Scenes and Artist Printmakers from the Collection of Reba and Dave Williams*** at Bush-Holley Historic Site. Members of the Bruce Museum and the Historical Society will get in free to both exhibitions.

---

The Bruce Museum is located at 1 Museum Drive in Greenwich, Connecticut, USA. General admission is \$7 for adults, \$6 for seniors and students, and free for children under five and Bruce Museum members. Free admission to all on Tuesdays. The Museum is located near Interstate-95, Exit 3, and a short walk from the Greenwich, CT, train station. Museum hours are: Tuesday through Saturday 10 a.m. to 5 p.m., Sunday 1 p.m. to 5 p.m., and closed Mondays and major holidays. Groups of eight or more require advance reservations. Museum exhibition tours are held Fridays at 12:30 p.m. Free, on-site parking is available. The Bruce Museum is accessible to individuals with disabilities. For information, call the Bruce Museum at (203) 869-0376, or visit the Bruce Museum website at [www.brucemuseum.org](http://www.brucemuseum.org).

\* \* \* \* \*