

Masterpieces of European Painting from Museo de Arte de Ponce

June 13, 2009 – September 6, 2009

Bruce Museum, 1 Museum Drive, Greenwich, CT 06830

These images are available as digital files (JPEG 300 dpi) for exhibition publicity only. To receive images via e-mail contact: Mike Horyczun, Bruce Museum Director of Public Relations, (203) 413-6735, or mike@brucemuseum.org.

Special Note: Images may not be cropped, altered, or overprinted.



1_Mellin

Charles Mellin (1600-1649)
Assumption of the Virgin, ca. 1630
Oil on canvas, 39 3/16 x 41 1/4 in.
Collection Museo de Arte de Ponce.
Fundación Luis A. Ferré, Inc.,
Ponce, Puerto Rico
Photo John Betancourt



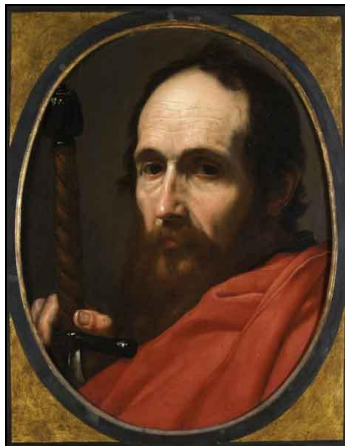
2_Teniers

David Teniers II (1610-1690)
The Temptation of Saint Anthony, ca. 1665
Oil on canvas, 43 7/8 x 58 5/8 in.
Collection Museo de Arte de Ponce.
Fundación Luis A. Ferré, Inc.
Ponce, Puerto Rico
Photo John Betancourt



3_Furini

Francesco Furini (1603-1646)
Cephalus and Aurora, 1625
Oil on canvas, 92 3/8 x 75 1/2 in.
Collection Museo de Arte de Ponce.
Fundación Luis A. Ferré, Inc.
Ponce, Puerto Rico
Photo John Betancourt



4_de Ribera

Jusepe de Ribera (1591-1652)
St. Paul, ca. 1630
Oil on wood pane, 19 1/2 x 15 3/16 in.
Collection Museo de Arte de Ponce.
Fundación Luis A. Ferré, Inc.
Ponce, Puerto Rico.
Photo John Betancourt



5_Batoni

Pompeo Batoni (1708-1787)
Antiochus and Stratonice, 1746
Oil on canvas, 74 3/8 x 91 3/8 in.
Collection Museo de Arte de Ponce.
Fundación Luis A. Ferré, Inc. Ponce, Puerto Rico
Photo John Betancourt



6_Traversi

Gaspare Traversi (1722-ca. 1770)
The Seduction, ca. 1752
Oil on canvas, 35 1/2 x 43 in.
Collection Museo de Arte de Ponce. Fundación
Luis A. Ferré, Inc. Ponce, Puerto Rico
Photo John Betancourt

Masterpieces of European Painting from Museo de Arte de Ponce

June 13, 2009 – September 6, 2009

Bruce Museum, 1 Museum Drive, Greenwich, CT 06830

These images are available as digital files (JPEG 300 dpi) for exhibition publicity only. To receive images via e-mail contact: Mike Horyczun, Bruce Museum Director of Public Relations, (203) 413-6735, or mike@brucemuseum.org.

Special Note: Images may not be cropped, altered, or overprinted.



7_ di Cione

Jacopo di Cione (1320/30-ca. 1398)
Annunciation with Donor, ca. 1375-1380 Tempera on wood panel, 51 3/4 x 52 in. Collection Museo de Arte de Ponce. Fundación Luis A. Ferré, Inc. Ponce, Puerto Rico, Gift of Samuel H. Kress Foundation, New York. Photo John Betancourt



8_ Tissot

James Tissot (1836-1902)
In the Louvre (L'Esthetique) 1883-1885 Oil on canvas, 58 x 39 3/8 in. Collection Museo de Arte de Ponce. Fundación Luis A. Ferré, Inc. Ponce, Puerto Rico Photo John Betancourt



9_ Gerome

Jean-Leon Gerome (1824-1904)
Queen Rodope Observed by Gyges, 1859 Oil on canvas 26 3/8 x 39 3/8 in. Collection Museo de Arte de Ponce. Fundación Luis A. Ferré, Inc. Ponce, Puerto Rico Photo John Betancourt



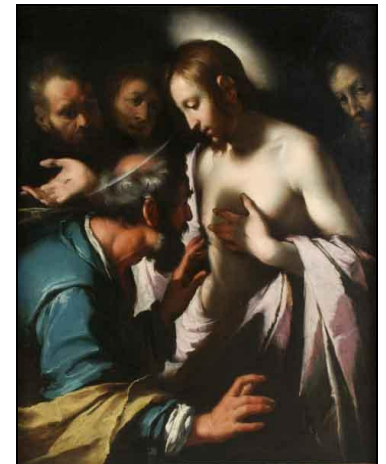
10_ Sorolla y Bastida

Joaquin Sorolla y Bastida (1863-1923)
Female Nude, 1886 Oil on canvas, 25 1/8 x 32 5/8 in. Collection Museo de Arte de Ponce. Fundación Luis A. Ferré, Inc. Ponce, Puerto Rico. Photo John Betancourt



11_ de Champaigne

Philippe de Champaigne (1602-1674)
Presentation of Christ in the Temple, ca. 1648 Oil on canvas 43 x 33 3/4 in. Collection Museo de Arte de Ponce. Fundación Luis A. Ferré, Inc. Ponce, Puerto Rico Photo John Betancourt



12_ Strozzi

Bernardo Strozzi (1581-1644)
Doubting Thomas, ca. 1620 Oil on canvas, 44 1/8 x 35 1/4 in. Collection Museo de Arte de Ponce. Fundación Luis A. Ferré, Inc. Ponce, Puerto Rico Photo John Betancourt

